



The ENERGIN® GEN generator set produces electricity either parallel with the public network or with an isolated load. As an option, automatic emergency operation and/or island-parallel operation with other generators is possible.

The unit is supplied as a compact, fully functional unit, with or without a sound attenuating enclosure. The engine, generator, and the control and power panel are mounted, ready for operation on the vibration-decoupled base frame. A lubrication oil system, which allows operation of up to 2000 hours without manual lube oil refilling, is integrated on the unit.

The electrical control system provides protection and control functions for automatic or manual operation. A 12" touch panel informs about operating conditions and allows the operation and parameterization of the system. Various interfaces are available for communication with other power generators and an overhead control system. An Ethernet interface allows connection to the Internet for remote monitoring and remote maintenance.

The entire system is certified according to the BDEW medium voltage directive (Grid code).

#### TECHNICAL DATA

Manufacturer	R Schmitt Enertec	
ENERGIN® Type	M06 GEN H122	
Electrical power <sup>1</sup>	kW	122
Gas consumption <sup>2</sup> (LHV)	kW	351
Self consumption <sup>3</sup>	kW	5,6

#### DESIGN

Fuel type	Wood Gas	
Lower heating value LHV	kWh/Nm <sup>3</sup>	1,4
Gas flow pressure <sup>4</sup>	kPa	3,5 - 5,0
Inlet air temperature	°C	20
Exhaust temperature	°C	495

#### EXHAUST EMISSIONS<sup>5</sup> WITHOUT CATALYST

NO <sub>x</sub> <sup>6</sup>	mg/Nm <sup>3</sup>	500
CO	mg/Nm <sup>3</sup>	3000
Formaldehyde	mg/Nm <sup>3</sup>	100

#### ENGINE

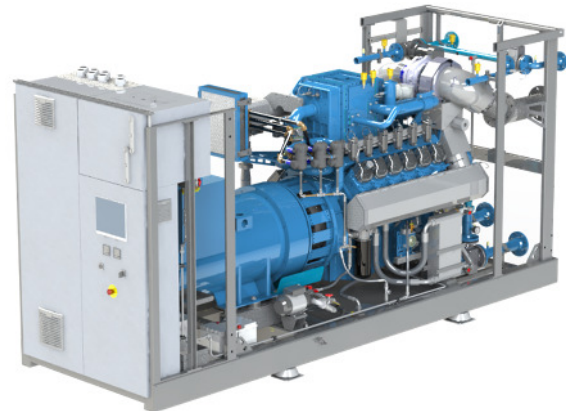
Manufacturer	R Schmitt Enertec	
ENERGIN® Type	M06-HT2D41	
Working principle	4-stroke	
Cylinder configuration	6 in V / 90°	
Valves per cylinder	4	
Aspiration	turbocharged	
Mixture cooling	2-staged	
Displacement	ltr	11,3

#### LUBE OIL

Lube oil volume	ltr	255
Consumption	ltr/OH	0,03

#### ALTERNATOR

Manufacturer	Leroy Somer	
Type	LSA 46.3 S4	
Voltage	V / Hz	400 / 50
Speed	1/min	1.500
Efficiency	%	95,1



#### PERFORMANCE<sup>7</sup>

Load		100 %	75 %	50 %
Electrical power	kW	122	92	61
Fuel consumption	kW	351	269	193
Gas flow at LHV	Nm <sup>3</sup> /h	244	187	134
Electrical efficiency	%	34,8	34,2	31,6
Exhaust gas flow <sup>8</sup>	m <sup>3</sup> /h	1.717	1.328	958
Air requirement	m <sup>3</sup> /h	4.216	3.543	3.024
Exhaust air <sup>9</sup>	m <sup>3</sup> /h	3.699	3.161	2.761

#### DIMENSIONS AND WEIGHTS WITH SOUND ENCLOSURE

Length	mm	3.200
Height	mm	2.000
Height with 90° elbow	mm	2.990
Width	mm	1.440
Dry weight	kg	3.050
Operational weight	kg	3.310

#### CONNECTIONS

Exhaust	DN / PN	150 / 10
Fuel gas	DN / PN	80 / 16
Cooling water LT	DN / PN	40 / 16
Cooling water HT	DN / PN	50 / 16

<sup>1</sup> +0 % tolerance on electrical power output

<sup>2</sup> +5 % tolerance on fuel consumption

<sup>3</sup> average self consumption with emergency cooling

<sup>4</sup> maximum variation of 10 % for set value

<sup>5</sup> Exhaust emissions related to 5 % oxygen in dry exhaust

<sup>6</sup> Setup for 250 mg/Nm<sup>3</sup> NO<sub>x</sub> possible (changed performance data)

<sup>7</sup> at standard conditions according to ISO 3046-1; cos φ = 1

<sup>8</sup> wet exhaust gas at 495 °C

<sup>9</sup> ΔT = 15 K



R Schmitt Enertec GmbH  
Siemensstraße 13  
56743 Mendig - Germany  
Phone +49 2652 93518 10  
Fax +49 2652 93518 22

R Schmitt Enertec International FZCO  
Apricot Tower, Office # 804, PO Box 341299  
Dubai Silicon Oasis, DSO, UAE  
Phone +971 4 333 5724  
Fax +971 4 333 9133

[www.rschmitt-enertec.com](http://www.rschmitt-enertec.com)  
[info@rschmitt-enertec.com](mailto:info@rschmitt-enertec.com)