



Natural Gas Generator Set

ENERGIN® M12 GEN G500

Datasheet, 250 mg NO_x

The ENERGIN® GEN generator set produces electricity either parallel with the public network or with an isolated load. As an option, automatic emergency operation and/or island-parallel operation with other generators is possible.

The unit is supplied as a compact, fully functional unit, with or without a sound attenuating enclosure. The engine, generator, and the control and power panel are mounted, ready for operation on the vibration-decoupled base frame. A lubrication oil system, which allows operation of up to 2000 hours without manual lube oil refilling, is integrated on the unit.

The electrical control system provides protection and control functions for automatic or manual operation. A 12" touch panel informs about operating conditions and allows the operation and parameterization of the system. Various interfaces are available for communication with other power generators and an overhead control system. An Ethernet interface allows connection to the Internet for remote monitoring and remote maintenance.

The entire system is certified according to the BDEW medium voltage directive (Grid code).

TECHNICAL DATA

Manufacturer	R Schmitt Enertec	
ENERGIN® Type	M12 GEN G500	
Electrical power ¹	kW	500
Gas consumption ² (LHV)	kW	1.223
Self consumption ³	kW	9,7

DESIGN

Fuel type	Natural Gas	
Lower heating value LHV	kWh/Nm ³	10,0
Gas flow pressure ⁴	kPa	2,2 - 5,0
Inlet air temperature	°C	20
Exhaust temperature	°C	489

EXHAUST EMISSIONS⁵ WITHOUT CATALYST

NO _x	mg/Nm ³	250
CO	mg/Nm ³	1500
Formaldehyde	mg/Nm ³	100

ENGINE

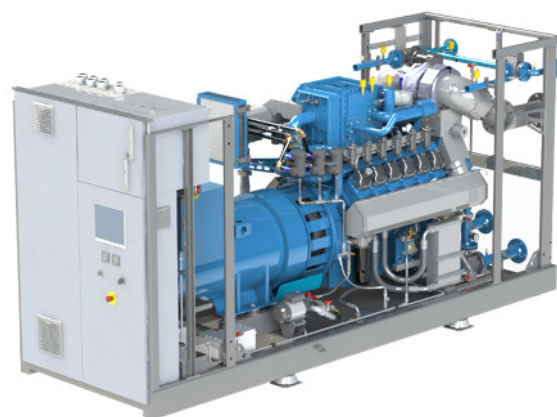
Manufacturer	R Schmitt Enertec	
ENERGIN® Type	M12-GT2D41	
Working principle	4-stroke	
Cylinder configuration	12 in V / 90°	
Valves per cylinder	4	
Aspiration	turbocharged	
Mixture cooling	2-staged	
Displacement	ltr	22,6

LUBE OIL

Lube oil volume	ltr	240
Make up tank volume	ltr	170
Consumption	ltr/OH	0,14

ALTERNATOR

Manufacturer	Leroy Somer	
Type	LSA 49.3 M6	
Voltage	V / Hz	400 / 50
Speed	1/min	1.500
Efficiency	%	96,1



PERFORMANCE⁶

Load		100 %	75 %	50 %
Electrical power	kW	500	375	250
Fuel consumption	kW	1.223	937	671
Gas flow at LHV	Nm ³ /h	122	93	67
Electrical efficiency	%	40,9	40,0	37,3
Exhaust gas flow ⁷	m ³ /h	5.460	3.953	2.647
Air requirement	m ³ /h	11.592	9.215	7.364
Exhaust air ⁸	m ³ /h	9.371	7.652	6.345

DIMENSIONS AND WEIGHTS WITH SOUND ENCLOSURE

Length	mm	4.380
Height	mm	2.030
Height with 90° elbow	mm	3.190
Width	mm	1.440
Dry weight	kg	5.590
Operational weight	kg	5.990

CONNECTIONS

Exhaust	DN / PN	150 / 10
Fuel gas	DN / PN	65 / 16
Cooling water LT	DN / PN	50 / 16
Cooling water HT	DN / PN	80 / 16

¹ +0 % tolerance on electrical power output

² +5 % tolerance on fuel consumption

³ average self consumption with emergency cooling

⁴ maximum variation of 10 % for set value

⁵ Exhaust emissions related to 5 % oxygen in dry exhaust

⁶ at standard conditions according to ISO 3046-1; cos φ = 1

⁷ wet exhaust gas at 489 °C

⁸ ΔT = 15 K



R Schmitt Enertec GmbH
Siemensstraße 13
56743 Mendig - Germany
Phone +49 2652 93518 10
Fax +49 2652 93518 22

R Schmitt Enertec International FZCO
Apricot Tower, Office # 804, PO Box 341299
Dubai Silicon Oasis, DSO, UAE
Phone +971 4 333 5724
Fax +971 4 333 9133

www.rschmitt-enertec.com
info@rschmitt-enertec.com