



# Propane Generator Set

## ENERGIN® M08 GEN P233

### Datasheet, 250 mg NO<sub>x</sub>

The ENERGIN® GEN generator set produces electricity either parallel with the public network or with an isolated load. As an option, automatic emergency operation and/or island-parallel operation with other generators is possible.

The unit is supplied as a compact, fully functional unit, with or without a sound attenuating enclosure. The engine, generator, and the control and power panel are mounted, ready for operation on the vibration-decoupled base frame. A lubrication oil system, which allows operation of up to 2000 hours without manual lube oil refilling, is integrated on the unit.

The electrical control system provides protection and control functions for automatic or manual operation. A 12" touch panel informs about operating conditions and allows the operation and parameterization of the system. Various interfaces are available for communication with other power generators and an overhead control system. An Ethernet interface allows connection to the Internet for remote monitoring and remote maintenance.

The entire system is certified according to the BDEW medium voltage directive (Grid code).

#### TECHNICAL DATA

Manufacturer	R Schmitt Enertec	
ENERGIN® Type	M08 GEN P233	
Electrical power <sup>1</sup>	kW	233
Gas consumption <sup>2</sup> (LHV)	kW	688
Self consumption <sup>3</sup>	kW	6,7

#### DESIGN

Fuel type	Propane	
Lower heating value LHV	kWh/Nm <sup>3</sup>	26,2
Gas flow pressure <sup>4</sup>	kPa	2,2 - 5,0
Inlet air temperature	°C	20
Exhaust temperature	°C	496

#### EXHAUST EMISSIONS<sup>5</sup> WITHOUT CATALYST

NO <sub>x</sub>	mg/Nm <sup>3</sup>	250
CO	mg/Nm <sup>3</sup>	1500
Formaldehyde	mg/Nm <sup>3</sup>	100

#### ENGINE

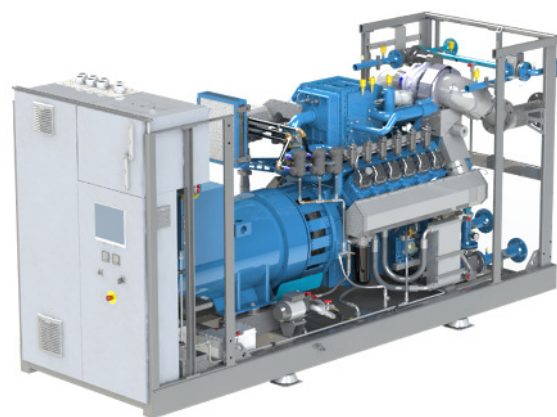
Manufacturer	R Schmitt Enertec	
ENERGIN® Type	M08-PTID41	
Working principle	4-stroke	
Cylinder configuration	8 in V / 90°	
Valves per cylinder	4	
Aspiration	turbocharged	
Mixture cooling	internal	
Displacement	ltr	15,1

#### LUBE OIL

Lube oil volume	ltr	162
Make up tank volume	ltr	170
Consumption	ltr/OH	0,07

#### ALTERNATOR

Manufacturer	Leroy Somer	
Type	LSA 47.2 M8	
Voltage	V / Hz	400 / 50
Speed	1/min	1.500
Efficiency	%	96,1



#### PERFORMANCE<sup>6</sup>

Load		100 %	75 %	50 %
Electrical power	kW	233	175	117
Fuel consumption	kW	688	527	378
Gas flow at LHV	Nm <sup>3</sup> /h	26	20	14
Electrical efficiency	%	33,9	33,2	31,0
Exhaust gas flow <sup>7</sup>	m <sup>3</sup> /h	2.749	2.075	1.457
Air requirement	m <sup>3</sup> /h	5.978	5.140	4.182
Exhaust air <sup>8</sup>	m <sup>3</sup> /h	4.871	4.331	3.631

#### DIMENSIONS AND WEIGHTS WITH SOUND ENCLOSURE

Length	mm	4.040
Height	mm	2.030
Height with 90° elbow	mm	2.990
Width	mm	1.440
Dry weight	kg	4.090
Operational weight	kg	4.420

#### CONNECTIONS

Exhaust	DN / PN	150 / 10
Fuel gas	DN / PN	50 / 16
Cooling water HT	DN / PN	65 / 16

<sup>1</sup> +0 % tolerance on electrical power output

<sup>2</sup> +5 % tolerance on fuel consumption

<sup>3</sup> average self consumption with emergency cooling

<sup>4</sup> maximum variation of 10 % for set value

<sup>5</sup> Exhaust emissions related to 5 % oxygen in dry exhaust

<sup>6</sup> at standard conditions according to ISO 3046-1; cos φ = 1

<sup>7</sup> wet exhaust gas at 496 °C

<sup>8</sup> ΔT = 15 K



R Schmitt Enertec GmbH  
Siemensstraße 13  
56743 Mendig - Germany  
Phone +49 2652 93518 10  
Fax +49 2652 93518 22

R Schmitt Enertec International FZCO  
Apricot Tower, Office # 804, PO Box 341299  
Dubai Silicon Oasis, DSO, UAE  
Phone +971 4 333 5724  
Fax +971 4 333 9133

[www.rschmitt-enertec.com](http://www.rschmitt-enertec.com)  
[info@rschmitt-enertec.com](mailto:info@rschmitt-enertec.com)